

From Box to First Backup in Less Than 30 Minutes



DCIG 2011 Midrange Deduplication Appliance Buyer's Guide

"#1 Best in Class" - ExaGrid rated as "Excellent" for target-based deduplication hardware across all products.



ExaGrid Named Disk Backup Champion

ExaGrid receives highest rating for exceptional product architecture, exemplary company strategy and strong viability, reach, and channel.



Best Deployment Scenario Winner - Data Recovery

ExaGrid's disk-based backup solution saves Stratetic Hotels & Resorts over \$150,000 annually, provides three-month ROI.



ExaGrid Recognized as "Top Emerging Vendor" in Customer Interest

ExaGrid and CommVault Simpana: Simple, Quick and Cost-Effective Disk-Based Backup

Efficient disk-based backup requires close integration between the backup software and the disk device. That is the advantage delivered by the partnership between CommVault® Simpana Backup and Recovery, and ExaGrid Systems®. Together, CommVault and ExaGrid Systems provide a cost-effective disk-based backup solution that maximizes data reduction and scales to meet the needs of demanding enterprise environments.

Fast Backup and Restore Performance

Moving from tape to a disk-based backup appliance from ExaGrid can significantly reduce backup times, helping customers stay within their backup window and avoiding the hassles and delays of backing up to tape. Restores are also much faster and easier, as ExaGrid's post-processing architecture keeps the most recent backup intact in non-deduplicated form, ready to be rapidly restored when needed.

Maximum Data Reduction via ExaGrid and Simpana Deduplication

CommVault Simpana and ExaGrid combine to provide maximum deduplication of backup data in order to achieve minimal disk usage and lower bandwidth needs for data replication. Simpana can send either source-side and/or target-side deduplicated backup data to the ExaGrid appliance, after which ExaGrid employs its deduplication to reduce data even further. The end result is dramatically lower disk use due to deduplication. And in addition to providing disk savings, ExaGrid and Simpana deduplication also greatly increases WAN efficiency when transferring a copy of your data to an offsite location for disaster recovery protection.

Superior Scalability with No "Forklift" Upgrades

With ExaGrid's grid-based architecture, each appliance in the system brings with it not only additional disk, but also additional memory, bandwidth, and processing power – all the elements needed to maintain high backup performance. This keeps your backup window short as your data grows, as growth is accommodated by simply adding additional appliances to the grid. There is no need to replace less powerful appliances with more powerful ones – no forklift upgrades – you simply add more appliances to the grid as suits your needs. You get the shortest possible backup times, with the ability to easily keep those times short as your data grows over time.

Easy to Install, Use and Manage

With the combination of CommVault Simpana and ExaGrid disk-based backup, you can eliminate the management hassles of tape and also avoid expensive, complex VTL-based solutions. The ExaGrid appliance fits easily into your backup environment behind your existing CommVault Simpana backup server. Simply plug in the ExaGrid behind your backup server and point your Simpana backups to the ExaGrid appliance via a NAS (CIFS or NFS) share, and you are ready to begin executing backups. Once installed, backup management is made simple with ExaGrid's intuitive management interface and reporting capabilities.



ExaGrid® Cost-Effective Disk-Based Backup™

Getting Started

CommVault Simpana® users may be surprised how quickly they can have their first backup running on ExaGrid's cost-effective and scalable disk-based backup system. Many ExaGrid customers are operating in just thirty minutes. It's a simple four-step process to point CommVault Simpana backups to ExaGrid's "plug-and-play" disk-based backup system:

Step 1: Turn It On

ExaGrid is an appliance. No loading software. No complicated assembly. Simply unpack it, rack it, turn it on, and point your existing backup jobs.

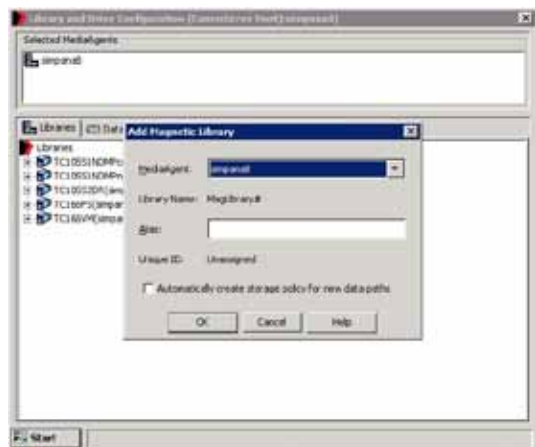
Step 2: Point and Click to Create a Share

Create share(s) on the ExaGrid system for CommVault Simpana using its web interface. This screen shot shows how simple this is. No installation or configuration process required.



Step 3: Define Shares

Using CommVault Simpana, you can easily define an ExaGrid share as a magnetic library.



Step 4: Redirect Existing Backup Jobs

Using CommVault Simpana, you simply point the existing backup job(s) to the ExaGrid system's target share.

That's it for most installations. You may also choose to do additional organization of backups since the ExaGrid system is easily customized to fit your backup and business processes.

Complementary CommVault Simpana Features

Simpana Backup and Recovery software is the foundation of a modern data management solution. And a modern solution allows users to better manage information assets, recover data more quickly, and ultimately save money over loosely integrated, legacy solutions.

CommVault optimized Simpana 9 software in order to protect data and information assets wherever they reside; physical, virtual, and in the cloud. It delivers a truly unified approach that helps users achieve dramatic results.

CommVault Simpana and ExaGrid work together in a number of complementary ways:

- CommVault Simpana and ExaGrid provide complementary deduplication, together offering maximum data reduction benefits
- CommVault Simpana recognizes the ExaGrid system as a magnetic library
- CommVault Simpana supports partial or single file recoveries
- CommVault Simpana software enables auxiliary copy to tape
- CommVault Simpana software provides a data verification tool



Customer Example

"The ExaGrid system works well with CommVault Simpana, and because we now have significantly more capacity, we have been able to restructure our backups to make them more efficient. Together, the two products enable us to perform daily incremental backups and synthetic full backups which makes our entire process run more smoothly."

- Svend Knudskov Manager, IT Infrastructure and Telephony, Alberta Motor Association