

SQL Backups with Quest Software's LiteSpeed® for SQL Server and ExaGrid



Storage Magazine Products of the Year Award: Gold Medal Winner

"ExaGrid remains one of the few vendors thinking about how a system grows with the customer. Kudos on taking it to the next level."



InfoWorld 100 Award Winner

"Being recognized for one of the most innovative IT projects of the year by InfoWorld is a great honor for GreenBank, we are very proud to have received this for our use of ExaGrid's disk-based backup technology."



Best Deployment Scenario Winner - Data Recovery

"ExaGrid's disk-based backup solution saves Gardner Trucking an estimated \$200K 24 hours after installation."



ExaGrid Named a Gartner "Cool Vendor" in Data Protection

"Companies named 'Gartner Cool Vendors' are Innovative, Impactful, and Intriguing."

Disk-Based SQL Backups with LiteSpeed and ExaGrid

LiteSpeed® for SQL Server users can quickly and efficiently back up their SQL databases on the most cost-effective and scalable disk-based backup system available on the market.

By protecting SQL databases with an ExaGrid appliance, customers can gain improved backup performance, fast and reliable data restores, and rapid recovery from system or site disasters.

Fast, Simple, Disk-Based Backups

With the combination of LiteSpeed and ExaGrid disk-based backup with deduplication, you can achieve faster backups and store data in much smaller footprints. ExaGrid's post-processing architecture allows SQL backups from LiteSpeed to land at the speed of disk, while deduplication is performed afterward. Combined with LiteSpeed's Fast Compression feature that reduces the backup size, maximum backup performance can be achieved.

Quick and Reliable Restore Performance

The ExaGrid appliance keeps the most recent SQL backup from LiteSpeed intact in its non-deduplicated form. This allows for rapid restores when needed, which is very handy when you need to get someone their data back right away. LiteSpeed's Object-Level Recovery is also supported, allowing for more granular restores when an entire database restore is not needed.

Superior Scalability with No "Forklift" Upgrades

With ExaGrid's grid-based architecture, each appliance in the system brings with it not only additional disk, but also additional memory, bandwidth, and processing power – all the elements needed to maintain high backup performance. This keeps your backup window short as your data grows, as growth is accommodated by simply adding additional appliances to the grid. There is no need to replace less powerful appliances with more powerful ones – no forklift upgrades – you simply add more appliances to the grid as suits your needs. You get the shortest possible backup times, with the ability to easily keep those times short as your data grows over time.

WAN Efficient Method to Move Backups to Off-Site Disk

The costs and hassles of handling, transporting, securing and storing tapes at offsite locations for disaster recovery was once a necessary evil. With ExaGrid, organizations can nearly eliminate the need to restore from tape, even when the restore is coming from an offsite copy of the backup data. ExaGrid's disk-based backup with deduplication not only saves capacity for storing backups, but also it brings a 50 to 1 WAN efficiency ratio for transferring a copy of that data to an offsite location for disaster recovery protection. A secure connection assures data integrity while also alleviating hours of manual handling of tapes to and from locations.

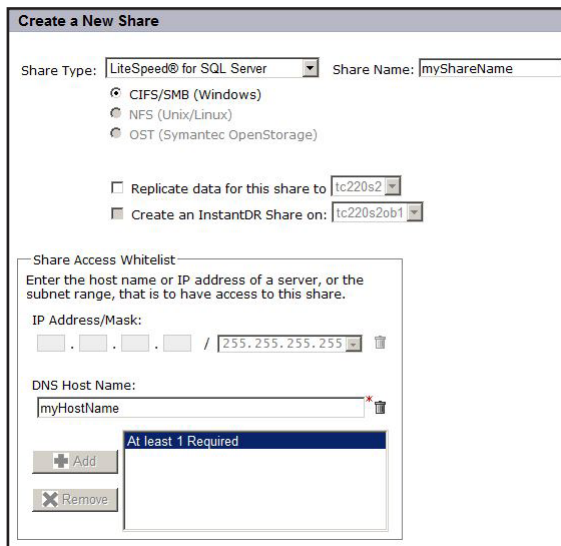


Getting Started

It's a simple process to back up data from LiteSpeed for SQL Server to an ExaGrid appliance:

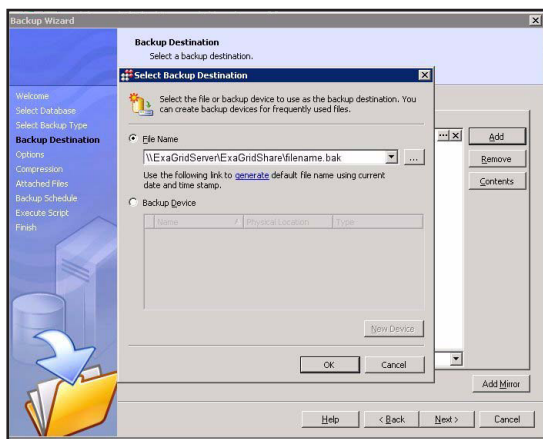
Step 1: Point and Click to Create a Share

Create a LiteSpeed share on the ExaGrid appliance using its simple web interface. The LiteSpeed share on the ExaGrid is where the data from the SQL server will be stored.



Step 2: Create a LiteSpeed Backup Job

You can easily create a new LiteSpeed Backup Job using the LiteSpeed Backup Wizard and specifying the newly-created ExaGrid share and a file name to which to send the LiteSpeed backups.



Step 3 (optional): Replicate the data to an offsite ExaGrid appliance

You can also set up a second, off-site ExaGrid appliance and replicate the SQL server backup from the local ExaGrid to the remote ExaGrid, for off-site data protection.

About LiteSpeed for SQL Server

LiteSpeed for SQL Server delivers unprecedented capabilities in backup compression, speed and control. It greatly reduces backup times and storage costs with smaller, more intelligently managed backups. Its patent-pending Fast Compression technology reduces the database backup footprint and provides improved validation to ensure that data can be recovered quickly and efficiently. LiteSpeed for SQL Server includes the following features and benefits:

Fast Compression: Achieve significant reductions in backup size and time with the highest degree of recoverability

Network Resilience: Recover automatically from I/O problems

SmartCleanup: Remove backups from disk with customized retention parameters without disrupting backup integrity

Object-Level Recovery: Restore individual objects and query backup files without doing a database restore

Transaction Log Reader: Roll back transactions to recover data and objects from operations that would otherwise adversely affect the database

Centralized Reporting: Track all backup activity for easy DBA review by using the comprehensive reporting option