

From Box To First Backup In Less Than 30 Minutes



Storage Magazine Product of the Year Award: Gold Medal Winner

"ExaGrid remains one of the few vendors thinking about how a system grows with the customer. Kudos on taking it to the next level."



InfoWorld 100 Award Winner

"Being recognized for one of the most innovative IT projects of the year by InfoWorld is a great honor for GreenBank, we are very proud to have received this for our use of ExaGrid's disk-based backup technology."



Best Deployment Scenario Winner - Data Recovery

"ExaGrid's disk-based backup solution saves Gardner Trucking an estimated \$200K 24-hours after installation."

Gartner

ExaGrid Named a Gartner "Cool Vendor" in Data Protection

"Companies named 'Gartner Cool Vendors' are Innovative, Impactful, and Intriguing."

Symantec Backup Exec Customers Can Add ExaGrid for Simple, Quick and Cost-Effective Disk-based Backup and Recovery

Symantec Backup Exec™ users may be surprised how quickly they can have their first backup running on the most cost-effective and scalable disk-based backup system available on the market. Many ExaGrid customers are operating in twenty minutes. With four simple steps, a few moments are all it takes.

That's the power of the Symantec and ExaGrid Systems® partnership. Together, Symantec and ExaGrid provide the most scalable, easiest to implement and cost-effective option.

Symantec Backup Exec award-winning ability to rapidly backup to disk while eliminating repetitive backup windows, combined with the benefits of ExaGrid Systems' compression and byte-level data de-duplication, save you money over standard disk solutions. ExaGrid's scalable GRID architecture means that as your data grows, you can simply plug in additional ExaGrid systems to create a larger virtual pool of storage, rather than a series of isolated boxes. This approach unleashes the true power of Symantec Backup Exec and ExaGrid to grow with you, without a lot of additional expense and on-going configuration and management hassles.

Your company's most valuable asset is its data. And, with ExaGrid and Symantec Backup Exec your backup and recoveries are faster, and more reliable. You can backup a wide variety of data types using Symantec Backup Exec 11d – from databases and Exchange, to applications, files, engineering drawings to images and more. In addition, Backup Exec's revolutionary granular recovery technology (GRT) means you can recover critical data, individual email, documents, files and objects, in a matter of seconds.

You can also eliminate offsite tapes by having a copy of your backups off-site on disk using data reduction to efficiently transfer the data. Achieve faster and more reliable recoveries in the event of a disaster, with minimal WAN bandwidth utilized as only the changes traverse the WAN.

ExaGrid's disk-based backup system incorporates data reduction, so only the changes are moved from backup to backup, and backups can be kept up to date offsite with WAN efficiency. Most backup data changes about 2% from backup to backup, so only 1/50th of the data will move across the WAN.

Getting Started

It's a simple four-step process to point Symantec Backup Exec backups to ExaGrid's "plug-and-play" disk-based backup system:

Step 1: Turn It On

ExaGrid is an appliance. No loading software. No complicated assembly. Simply unpack it, rack it, turn it on, and point to your existing backup jobs. Many times, this is the step that can take the longest.

Immediate Advantages

- 30% the cost of standard SATA storage due to a unique combination of compression and data deduplication
- Reduce backup window by 30 to 90 percent
- Meet service level goals and improve RTO since disk is significantly faster and more reliable than writing to and restoring from tape. Efficiently copy backup data automatically to a second site since only the bytes that change between backups traverse the WAN
- Automatically receive problem and status notifications



ExaGrid® Cost-Effective Disk-based Backup™

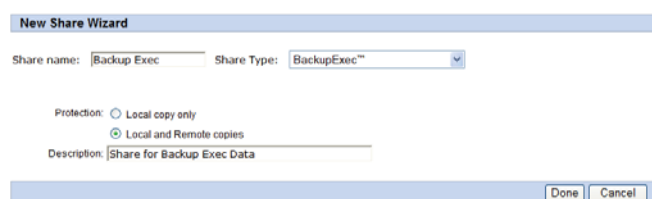
Ongoing Advantages

As your data grows, add capacity into a single virtual system vs. creating separate islands of backup storage – simple plug and play expansion. You can manage growth via automatic load balance and capacity management.

Backup Exec can protect a single server or multiple servers, a storage area network (SAN), or scale into large enterprises – and is easy to manage centrally.

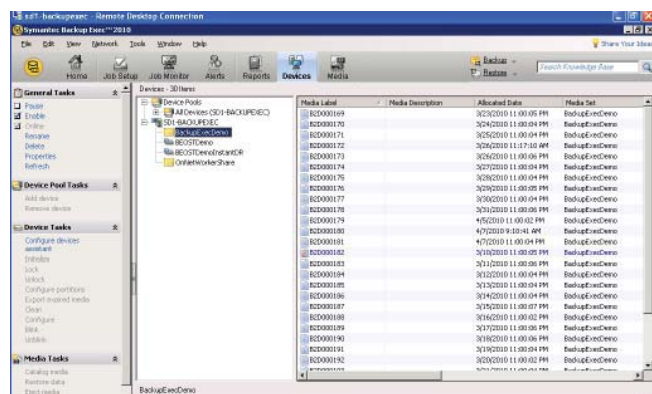
Step 2: Point and Click to Create a Share

Create share(s) on the ExaGrid System for Symantec Backup Exec using its web interface. This graphic illustrates how simple this can be. No installation or configuration process required.



Step 3: Define Shares

Using Symantec Backup Exec, you can easily define an ExaGrid share as a Backup-to-Disk folder.



Step 4: Re-Direct Existing Backup Jobs

Via Symantec Backup Exec, simply point the existing backup job(s) to the ExaGrid system's target share.

That's it for most installations. You may also choose to do additional organization of backups since the ExaGrid system is easily customized to fit your backup and business processes.

Symantec OpenStorage API

Symantec Backup Exec customers can take advantage of ExaGrid's support of the Symantec OpenStorage API. This integration offers customers a faster, more powerful, and more easily managed solution.

ExaGrid's support of the Symantec OpenStorage API provides seamless integration between Backup Exec and the ExaGrid disk-based backup system, including:

- Unified control and access of backup data stored on both local and remote ExaGrid systems, via the ability to track replication of backup data to an off-site ExaGrid system from within Backup Exec
- ExaGrid integration with Backup Exec backup policies, allowing Backup Exec to manage the duplication of backup copies between local and remote ExaGrid systems, and to tape
- Improved ability to monitor replicated backup status from within Backup Exec via integrated Backup Exec reporting
- Simplified disaster recovery via the ability to recover replicated backup data from an off-site ExaGrid system from within the Backup Exec console
- Shorter backup windows via OpenStorage data transfer optimization (optimized duplication), along with ExaGrid link balancing
- Direct backups from Windows servers to an ExaGrid system, bypassing the media server

Customer Example



St. Mary's Regional Medical Center serves Maine's Androscoggin County. Along with its 233-bed acute care facility, St. Mary's provides physician services and operates the state's largest nursing home, an independent living center for the elderly and disabled, and satellite occupational health offices.

"We still can't get over how fast the system is, compared to how it used to be with tape. And we've got plenty of room for growth with ExaGrid.

We sized the system to comfortably handle our needs today, but should we need more storage space, we can just add more capacity. It's a very simple process."

– Joe Longtin, Senior Network Engineer